

Info



**Welcome to Middlesex Maps**

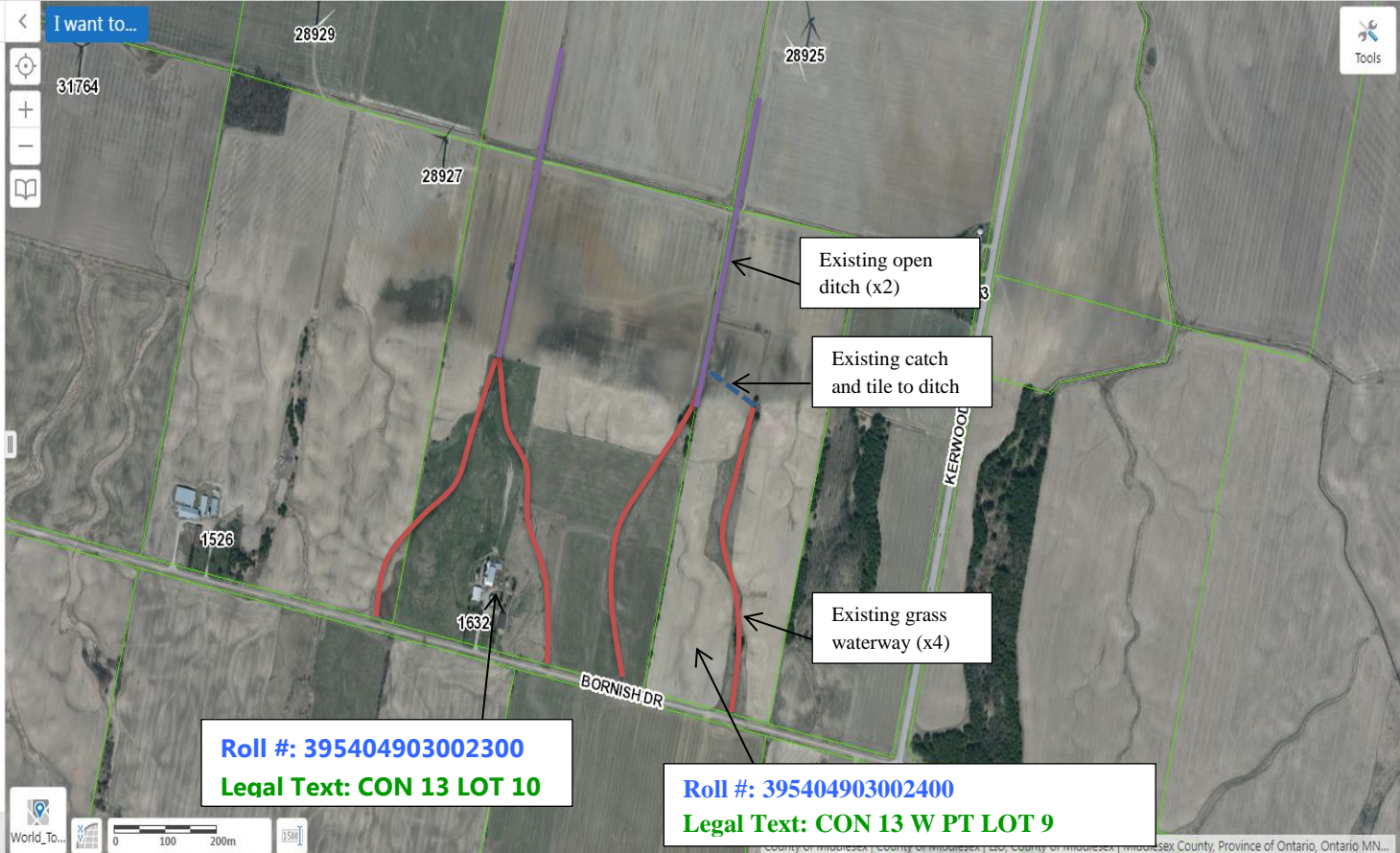
Click on the map or use the search bar to type in what you are looking for.

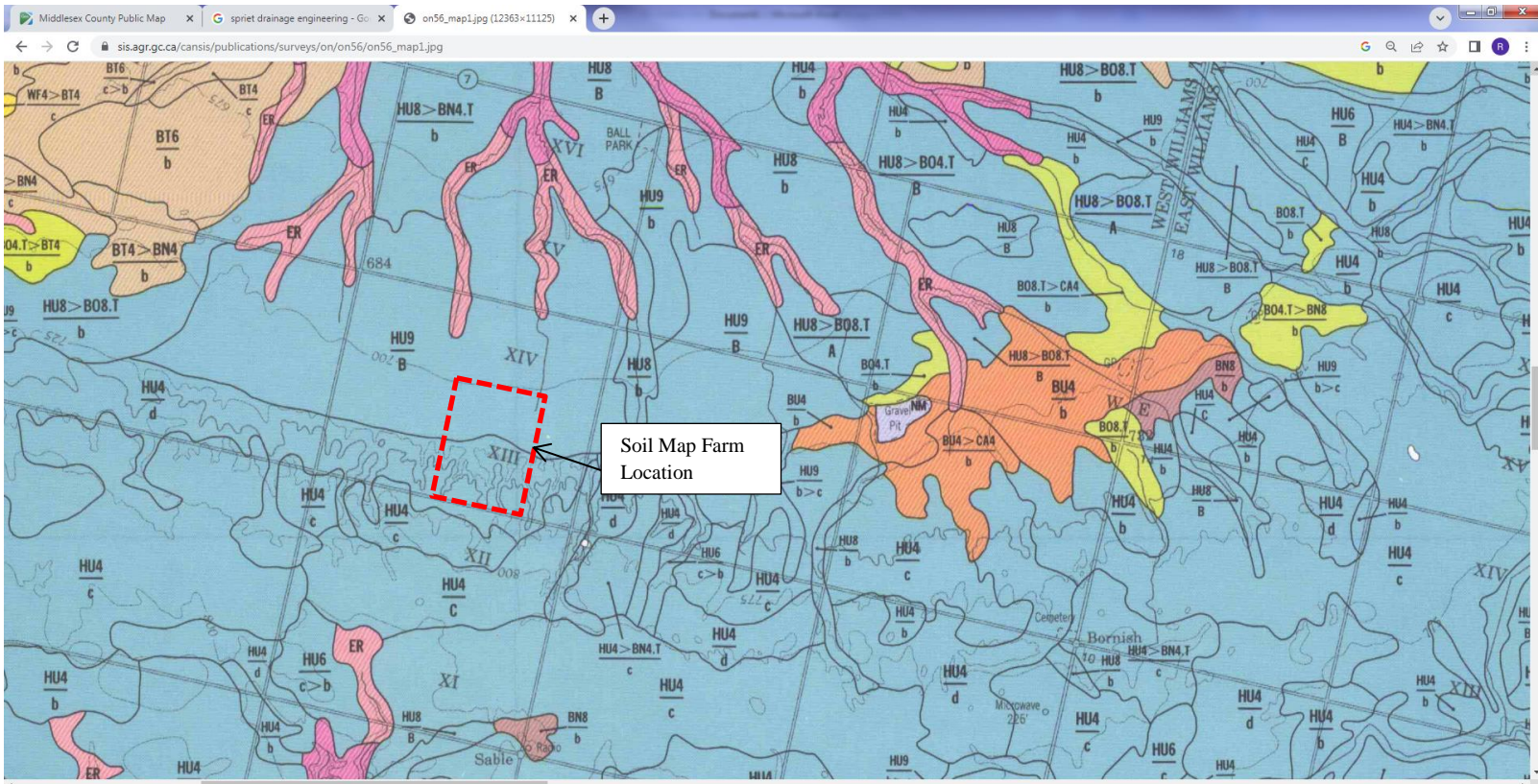
**The "Tool Bar"**  
Click on this symbol on the right hand corner of the map to open the tool bar which will display more tools for you to use.

**"Map Layers"**  
Click on this icon shown below to see the layers list.

Let us know what you think of Middlesex Maps. Click [here](#) to give us feedback.

World To...  





Soil Map Farm Location

0173e.pdf	<p><b>HURON (HU)</b></p> <p>Huron (HUO) - Moderately well Perth (PTH) - Imperfect Brookston (BKN) - Poor</p>	<p>Silt loam, loam, silty clay loam</p>	<p>Silty clay loam, silty clay and occasionally clay loam glacial till deposited by glaciation from the Lake Huron basin</p>	<p>HU4 HU8 HU8 HU9</p>	<p>Moderately well to imperfect Moderately well to imperfect Poor Poor</p>	<p>Poor</p> <p>Moderately well to imperfect</p>
-----------	--	---	--	------------------------------------	--	---

Soil defined as;

HU4/d – Silt Clay loam or clay load/5-9% slope

HU9/b - Silt Clay loam or clay load/.5-2% slope